

WWW.FRESHNREBEL.COM



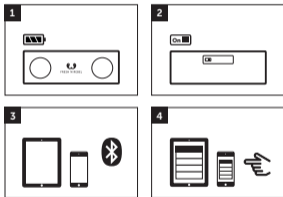
FRESH 'N REBEL

**ROCKBOX
CHUNK**

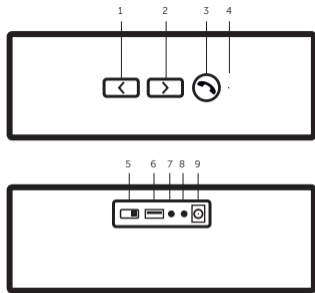
manual

GET CONNECTED!

1. Fully charge your Rockbox Chunk before use.
2. Turn on your Rockbox Chunk by switching the On/Off button.
3. Enable Bluetooth on your smartphone or tablet.
4. Select the Rockbox Chunk from the list of Bluetooth devices.



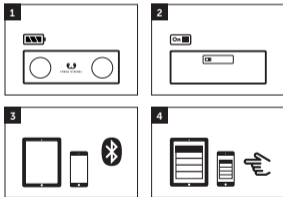
**THE ROCKBOX CHUNK IS NOW READY
TO UNLEASH YOUR FAVORITE MUSIC!**



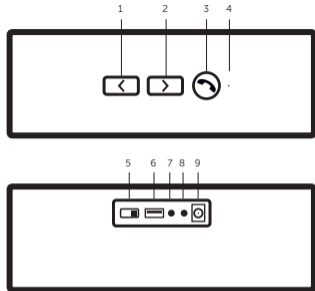
- | | |
|--------------------------------------|------------------|
| 1. Previous song / - volume | 5. Power button |
| 2. Next song / + volume | 6. Charging port |
| 3. ▶ / Press to answer /end calls | 7. Audio-in |
| 4. MIC | 8. Headset |
| | 9. Power |

MAAK VERBINDING!

1. Laad je Rockbox Chunk volledig op voor gebruik.
2. Schakel je Rockbox Chunk in met de aan-uitknop.
3. Schakel Bluetooth in op je smartphone of tablet.
4. Selecteer de Rockbox Chunk uit de lijst met Bluetooth-apparaten.



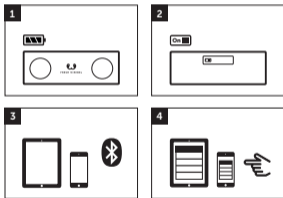
BEVRIJD JE FAVORIETE MUZIEK!



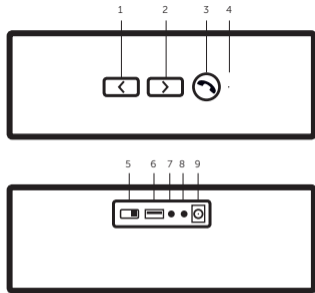
- | | |
|---|-----------------|
| 1. Vorig nummer / - volume | 5. Aan-uitknop |
| 2. Volgend nummer / + volume | 6. Oplaadpoort |
| 3. ► / Druk om oproepen te beantwoorden/beëindigen | 7. Audio-ingang |
| 4. Microfoon | 8. Headset |
| | 9. Power |

VERBINDUNG HERSTELLEN

1. Lade die Rockbox Chunk vor Gebrauch vollständig auf.
2. Schalte die Rockbox Chunk mit der Ein-/Aus-Taste ein.
3. Aktiviere Bluetooth auf deinem Smartphone oder Tablet.
4. Wähle die Rockbox Chunk aus der Liste der verfügbaren Bluetooth-Geräte aus.



**DEINE ROCKBOX CHUNK IST BEREIT FÜR
GRENZENLOSEN MUSIKGENUSS!**

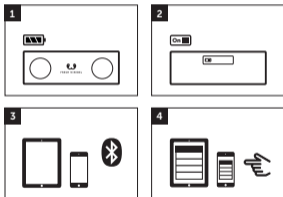


1. Vorheriger Song / Leiser
2. Nächster Song / Lauter
3. ▶ || / Telefonanrufe
annehmen / beenden
4. Mikrofon

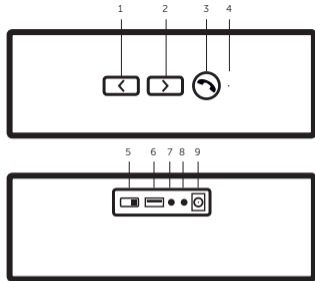
5. Ein-/Aus-Taste
6. Ladeanschluss
7. Audioeingang
8. Headset
9. Netzanschluss

CONNETTITI!

1. Carica completamente Rockbox Chunk prima del suo utilizzo.
2. Accendi Rockbox Chunk premendo il pulsante di accensione.
3. Abilita il Bluetooth sullo smartphone o sul tablet.
4. Seleziona Rockbox Chunk dall'elenco dei dispositivi Bluetooth.



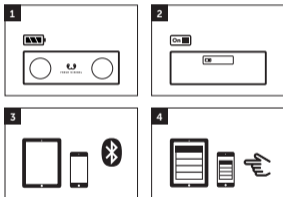
ROCKBOX CHUNK È ORA PRONTO A SPRIGIONARE TUTTA LA POTENZA DELLA TUA MUSICA PREFERITA!



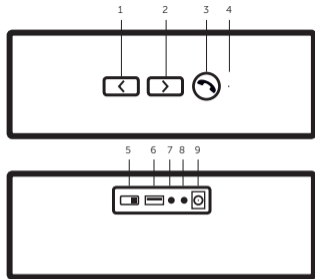
- | | |
|--|---------------------------|
| 1. Brano precedente /
Volume - | 4. Microfono |
| 2. Brano successivo /
Volume + | 5. Pulsante di accensione |
| 3. ► / Premere per accettare /
terminare le chiamate | 6. Porta di ricarica |
| | 7. Ingresso audio |
| | 8. Auricolare |
| | 9. Alimentazione |

¡CONÉCTATE!

1. Carga por completo tu Rockbox Chunk antes de utilizarlo.
2. Enciende el Rockbox Chunk pulsando el botón de alimentación.
3. Activa la función Bluetooth en tu smartphone o tableta.
4. Seleccione el Rockbox Chunk de la lista de dispositivos Bluetooth.



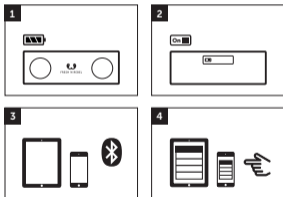
¡EL ROCKBOX CHUNK ESTARÁ LISTO PARA QUE DISFRUTES DE TU MÚSICA FAVORITA!



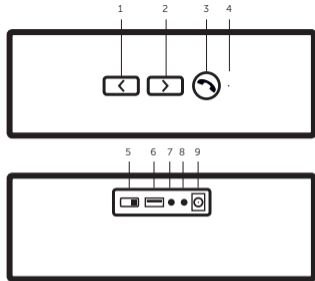
- | | |
|---|--------------------------|
| 1. Canción anterior /
- volumen | 4. Micrófono |
| 2. Siguiente canción /
+ volumen | 5. Botón de alimentación |
| 3. ► / Pulsar para responder /
finalizar llamadas | 6. Puerto de carga |
| | 7. Entrada de audio |
| | 8. Auriculares |
| | 9. Alimentación |

CONNECTEZ-VOUS!

1. Chargez totalement votre Rockbox Chunk avant utilisation.
2. Pour allumer votre Rockbox Chunk, activez le bouton Marche/Arrêt.
3. Activez la fonction Bluetooth sur votre smartphone ou votre tablette.
4. Sélectionnez le Rockbox Chunk dans la liste des périphériques Bluetooth.



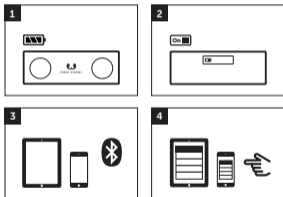
**LE ROCKBOX CHUNK EST MAINTENANT PRÊT
À LIBÉRER VOTRE MUSIQUE PRÉFÉRÉE!**



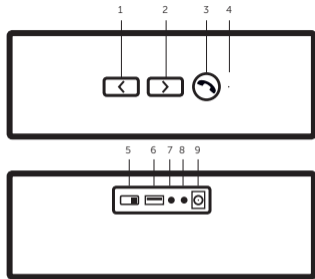
- | | |
|--|------------------------|
| 1. Morceau précédent /
- volume | 4. Microphone |
| 2. Morceau suivant /
+ volume | 5. Bouton Marche/Arrêt |
| 3. ► / Appuyez sur ce bouton pour
répondre / mettre fin à des appels | 6. Port de chargement |
| | 7. Entrée audio |
| | 8. Casque |
| | 9. Puissance |

EM CONTACTO!

1. Carregue totalmente a bateria antes de utilizar a sua Rockbox Chunk.
2. Ligue a Rockbox Chunk no botão de alimentação.
3. Ative o Bluetooth no seu smartphone ou tablet.
4. Selecione Rockbox Chunk na lista de dispositivos Bluetooth.



**A ROCKBOX CHUNK ESTÁ PRONTA
A DEBITAR AS SUAS MÚSICAS FAVORITAS!**



- | | |
|---|--------------------------|
| 1. Música anterior / - volume | 5. Botão de alimentação |
| 2. Música seguinte / + volume | 6. Porta de carregamento |
| 3. ► / Prima para atender /
terminar chamadas | 7. Entrada áudio |
| 4. Microfone | 8. Auscultadores |
| | 9. Alimentação |

EC Declaration of Conformity

Sitecom Europe BV • Linatebaan 101 • 3045 AH • Rotterdam • The Netherlands

We declare under our sole responsibility that the following product:

Product number: 1RB300
Product description: Bluetooth Speaker

Low Voltage Directive (LVD)

- EN 60950-1:2006
 - EN 60950-1:2006/A12:2011
 - EN 60950-1:2006/A1:2010
 - EN 60950-1:2006/A11:2009
- UL 2919

Electromagnetic Fields (EMF)

- EN 62311:2008

Electro-Magnetic Compatibility (EMC) Directive

- ETSI EN 301 489-1 V1.9.2

Radio and Telecom Terminal Equipment Directive (R&TTE)

- EN 300 328 V.1.7.1
- EN 300 328 V.1.8.1
- ETSI EN 301 489-17 V2.1.1
- ETSI EN 301 489-17 V2.2.1
- ETSI EN 301 489-1 V1.9.2
- EN 301 489-9 v.1.4.1

are fully in conformity with the essential requirements of the relevant EU Directives and other directives as listed below.

Sitecom Europe BV
Rotterdam, 17-06-2013

M. Bergwerff,



Chief Operations Officer





FRESH 'N REBEL